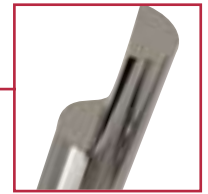


Bulino in metallo duro integrale

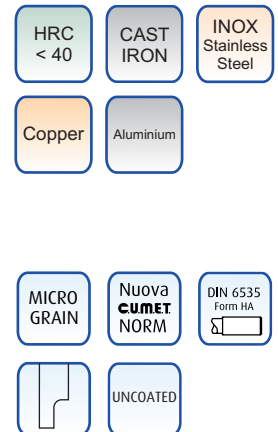
Solid carbide engraving tool

VHM - Gravierstichel - Fraise carbure à graver

Гравировальный инструмент твердосплавный - Sk polotovar roubík



CODE	d2h6 mm	l1 mm	L mm	S ^{+00,5} +0 mm
VBE020040	2	3.0	40	1
VBE020100	2	3.0	100	1
VBE030050	3	4.5	50	1.5
VBE030100	3	4.5	100	1.5
VBE040060	4	6.0	60	2
VBE040100	4	6.0	100	2
VBE050060	5	7.5	60	2.5
VBE050100	5	7.5	100	2.5
VBE060070	6	9.0	70	3
VBE060100	6	9.0	100	3
VBE060150	6	9.0	150	3
VBE080100	8	12.0	100	4
VBE080150	8	12.0	150	4
VBE100080	10	15.0	80	5
VBE100100	10	15.0	100	5
VBE100150	10	15.0	150	5
VBE120100	12	18.0	100	6
VBE120150	12	18.0	150	6
VBE140085	14	21.0	85	7
VBE140100	14	21.0	100	7
VBE140150	14	21.0	150	7
VBE140200	14	21.0	200	7
VBE160100	16	24.0	100	8
VBE160150	16	24.0	150	8
VBE160200	16	24.0	200	8
VBE180100	18	27.0	100	9
VBE180150	18	27.0	150	9
VBE180200	18	27.0	200	9
VBE200100	20	30.0	100	10
VBE200150	20	30.0	150	10
VBE200200	20	30.0	200	10

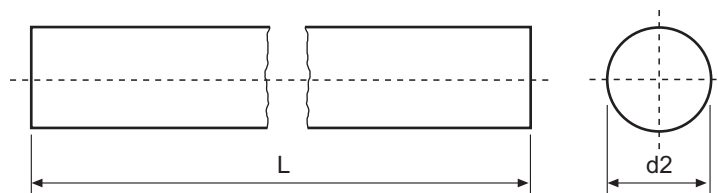
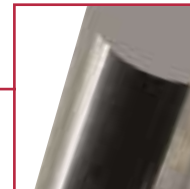


Cilindretto in metallo duro integrale

Solid carbide cylindrical rod

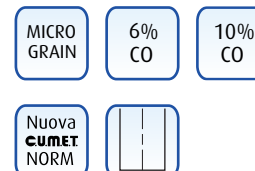
VHM - Rundstäbe - Barreaux carbure

Стержень твердосплавный цилиндрический - Sk válcová tyč



CODE UNGROUND (+0.3mm)	CODE GROUND (h6)	d2 mm	L mm
CGRE010x100	VCE010100	1	100
CGRE020x100	VCE020100	2	100
CGRE030x100	VCE030100	3	100
CGRE040x100	VCE040100	4	100
CGRE050x100	VCE050100	5	100
CGRE060x100	VCE060100	6	100
CGRE070x100	VCE070100	7	100
CGRE080x100	VCE080100	8	100
CGRE090x100	VCE090100	9	100
CGRE100x100	VCE100100	10	100
CGRE110x100	VCE110100	11	100
CGRE120x100	VCE120100	12	100
CGRE130x100	VCE130100	13	100
CGRE140x100	VCE140100	14	100
CGRE150x100	VCE150100	15	100
CGRE160x100	VCE160100	16	100
CGRE170x100	VCE170100	17	100
CGRE180x100	VCE180100	18	100
CGRE190x100	VCE190100	19	100
CGRE200x100	VCE200100	20	100
CGRE220x100	VCE220100	22	100
CGRE240x100	VCE240100	24	100
CGRE250x100	VCE250100	25	100
CGRE260x100	VCE260100	26	100
CGRE280x100	VCE280100	28	100
CGRE300x100	VCE300100	30	100
CGRE320x100	VCE320100	32	100

CODE UNGROUND (+0.3mm)	CODE GROUND (h6)	d2 mm	L mm
CGRE010x310	VCE010310	1.0	310
CGRE015x310	VCE015310	1.5	310
CGRE020x310	VCE020310	2.0	310
CGRE025x310	VCE025310	2.5	310
CGRE030x310	VCE030310	3.0	310
CGRE035x310	VCE035310	3.5	310
CGRE040x310	VCE040310	4.0	310
CGRE045x310	VCE045310	4.5	310
CGRE050x310	VCE050310	5.0	310
CGRE055x310	VCE055310	5.5	310
CGRE060x310	VCE060310	6.0	310
CGRE065x310	VCE065310	6.5	310
CGRE070x310	VCE070310	7.0	310
CGRE075x310	VCE075310	7.5	310
CGRE080x310	VCE080310	8.0	310
CGRE085x310	VCE085310	8.5	310
CGRE090x310	VCE090310	9.0	310
CGRE100x310	VCE100310	10.0	310
CGRE105x310	VCE105310	10.5	310
CGRE110x310	VCE110310	11.0	310
CGRE115x310	VCE115310	11.5	310
CGRE120x310	VCE120310	12.0	310
CGRE125x310	VCE125310	12.5	310
CGRE130x310	VCE130310	13.0	310
CGRE135x310	VCE135310	13.5	310
CGRE140x310	VCE140310	14.0	310
CGRE145x310	VCE145310	14.5	310
CGRE150x310	VCE150310	15.0	310
CGRE155x310	VCE155310	15.5	310
CGRE160x310	VCE160310	16.0	310
CGRE165x310	VCE165310	16.5	310
CGRE170x310	VCE170310	17.0	310
CGRE175x310	VCE175310	17.5	310
CGRE180x310	VCE180310	18.0	310
CGRE185x310	VCE185310	18.5	310
CGRE190x310	VCE190310	19.0	310
CGRE200x310	VCE200310	20.0	310
CGRE220x310	VCE220310	22.0	310
CGRE240x310	VCE240310	24.0	310
CGRE250x310	VCE250310	25.0	310
CGRE260x310	VCE260310	26.0	310
CGRE280x310	VCE280310	28.0	310
CGRE300x310	VCE300310	30.0	310
CGRE320x310	VCE320310	32.0	310

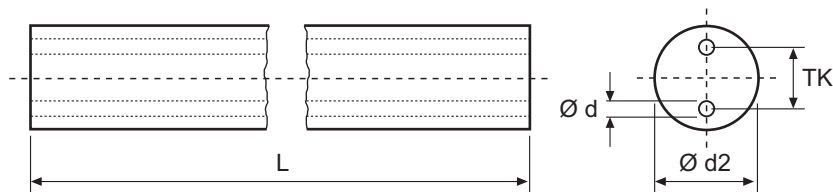


Cilindretto in metallo duro integrale con due fori paralleli

Solid carbide cylindrical rod with 2 parallel holes

VHM - Rundstäbe mit 2 Geraden Kühlkanälen - Barreaux carbure avec 2 trous d'huile droits

Стержень твердосплавный цилиндрический с подачей СОЖ - Sk válcová tyč se 2 paralelními otvory



CODE UNGROUND (+0.3mm)	CODE GROUND (h6)	d2 mm	L mm	TK mm	d mm
CG3FD2050330I2.0	VC3FD2050330I2.0	5	330	2.0	0.9
CG3FD2060330I1.1	VC3FD2060330I1.1	6	330	1.1	0.5
CG3FD2060330I1.7	VC3FD2060330I1.7	6	330	1.7	0.8
CG3FD2060330I2.0	VC3FD2060330I2.0	6	330	2.0	0.9
CG3FD2060330I2.3	VC3FD2060330I2.3	6	330	2.3	0.9
CG3FD2060330I2.4	VC3FD2060330I2.4	6	330	2.4	1.2
CG3FD2060330I3.0	VC3FD2060330I3.0	6	330	3.0	0.9
CG3FD2080330I1.7	VC3FD2080330I1.7	8	330	1.7	0.8
CG3FD2080330I2.0	VC3FD2080330I2.0	8	330	2.0	0.9
CG3FD2080330I2.6	VC3FD2080330I2.6	8	330	2.6	1.2
CG3FD2080330I3.0	VC3FD2080330I3.0	8	330	3.0	1.2
CG3FD2080330I3.5	VC3FD2080330I3.5	8	330	3.5	1.5
CG3FD2080330I4.0	VC3FD2080330I4.0	8	330	4.0	0.9
CG3FD2100330I2.6	VC3FD2100330I2.6	10	330	2.6	1.2
CG3FD2100330I3.5	VC3FD2100330I3.5	10	330	3.5	1.5
CG3FD2100330I4.0	VC3FD2100330I4.0	10	330	4.0	1.5
CG3FD2100330I5.0	VC3FD2100330I5.0	10	330	5.0	1.2
CG3FD2110330I3.5	VC3FD2110330I3.5	11	330	3.5	1.5
CG3FD2120330I3.5	VC3FD2120330I3.5	12	330	3.5	1.5
CG3FD2120330I4.0	VC3FD2120330I4.0	12	330	4.0	1.5
CG3FD2120330I5.0	VC3FD2120330I5.0	12	330	5.0	2.0
CG3FD2120330I6.2	VC3FD2120330I6.2	12	330	6.2	1.5
CG3FD2140330I2.6	VC3FD2140330I2.6	14	330	2.6	0.9
CG3FD2140330I3.5	VC3FD2140330I3.5	14	330	3.5	1.5
CG3FD2140330I5.0	VC3FD2140330I5.0	14	330	5.0	2.0
CG3FD2140330I7.0	VC3FD2140330I7.0	14	330	7.0	1.5
CG3FD2160330I3.5	VC3FD2160330I3.5	16	330	3.5	1.5
CG3FD2160330I5.0	VC3FD2160330I5.0	16	330	5.0	2.0
CG3FD2160330I6.2	VC3FD2160330I6.2	16	330	6.2	2.0
CG3FD2160330I8.0	VC3FD2160330I8.0	16	330	8.0	2.0
CG3FD2180330I5.0	VC3FD2180330I5.0	18	330	5.0	2.0
CG3FD2180330I6.2	VC3FD2180330I6.2	18	330	6.2	2.0
CG3FD2180330I7.0	VC3FD2180330I7.0	18	330	7.0	2.5
CG3FD2180330I9.0	VC3FD2180330I9.0	18	330	9.0	2.0
CG3FD2200330I3.5	VC3FD2200330I3.5	20	330	3.5	1.5
CG3FD2200330I6.2	VC3FD2200330I6.2	20	330	6.2	2.0
CG3FD2200330I7.0	VC3FD2200330I7.0	20	330	7.0	2.5
CG3FD2200330I100	VC3FD2200330I100	20	330	10.0	2.5
CG3FD2220330I7.0	VC3FD2220330I7.0	22	330	7.0	2.0
CG3FD2220330I110	VC3FD2220330I110	22	330	11.0	2.5
CG3FD2240330I6.2	VC3FD2240330I6.2	24	330	6.2	2.0
CG3FD2240330I7.0	VC3FD2240330I7.0	24	330	7.0	2.5
CG3FD2240330I120	VC3FD2240330I120	24	330	12.0	3.0
CG3FD2250330I8.0	VC3FD2250330I8.0	25	330	8.0	2.5
CG3FD2250330I120	VC3FD2250330I120	25	330	12.0	3.0
CG3FD2260330I120	VC3FD2260330I120	26	330	12.0	3.0
CG3FD2260330I130	VC3FD2260330I130	26	330	13.0	3.0
CG3FD2280330I100	VC3FD2280330I100	28	330	10.0	2.0
CG3FD2280330I130	VC3FD2280330I130	28	330	13.0	3.0
CG3FD2300330I130	VC3FD2300330I130	30	330	13.0	3.0
CG3FD2320330I130	VC3FD2320330I130	32	330	13.0	3.0

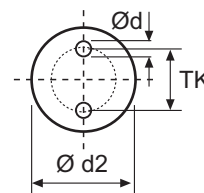
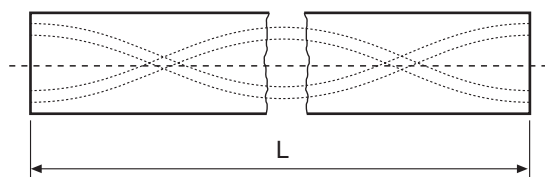


Cilindretto in metallo duro integrale con due fori elicoidali

Solid carbide rod with 2 twisted coolant holes

VHM - Rundstäbe mit 2 Verdrehten Kühlkanälen - Barreaux carbure avec 2 trous hélicoïdaux

Стержень твердосплавный цилиндрический с подачей СОЖ - Sk válcová tyč se 2 chladicími otvory ve spirále



CODE UNGROUND (+0.3mm)	CODE GROUND (h6)	d2 mm	L mm	TK mm	d mm	α°
CG3FE2030330I1.5	VC3FE2030330I1.5	3	330	1.5	0.4	30°
CG3FE2060330I1.9	VC3FE2060330I1.9	6	330	1.9	0.6	30°
CG3FE2060330I2.2	VC3FE2060330I2.2	6	330	2.2	0.8	30°
CG3FE2060330I2.6	VC3FE2060330I2.6	6	330	2.6	0.7	30°
CG3FE2080330I2.7	VC3FE2080330I2.7	8	330	2,7	0,7	30°
CG3FE2080330I3.5	VC3FE2080330I3.5	8	330	3,5	0,9	30°
CG3FE2080330I4.0	VC3FE2080330I4.0	8	330	4,0	1,0	30°
CG3FE2100330I2.7	VC3FE2100330I2.7	10	330	2,7	0,8	30°
CG3FE2100330I3.5	VC3FE2100330I3.5	10	330	3,5	0,8	30°
CG3FE2100330I4.8	VC3FE2100330I4.8	10	330	4.8	1.4	30°
CG3FE2120330I4.2	VC3FE2120330I4.2	12	330	4,2	0,9	30°
CG3FE2120330I5.4	VC3FE2120330I5.4	12	330	5.4	1.5	30°
CG3FE2120330I5.9	VC3FE2120330I5.9	12	330	5.9	1.7	30°
CG3FE2130330I6.5	VC3FE2130330I6.5	13	330	6.5	1.8	30°
CG3FE2140330I4.7	VC3FE2140330I4.7	14	330	4,7	1,0	30°
CG3FE2140330I7.1	VC3FE2140330I7.1	14	330	7.1	1.75	30°
CG3FE2140330I7.2	VC3FE2140330I7.2	14	330	7.1	2,0	30°
CG3FE2150330I7.7	VC3FE2150330I7.7	15	330	7.7	1.75	30°
CG3FE2160330I5.5	VC3FE2160330I5.5	16	330	5,5	1,2	30°
CG3FE2160330I8.3	VC3FE2160330I8.3	16	330	8.3	1.75	30°
CG3FE2160330I8.6	VC3FE2160330I8.6	16	330	8.6	2.5	30°
CG3FE2180330I9.5	VC3FE2180330I9.5	18	330	9.5	2,0	30°
CG3FE2180330I9.7	VC3FE2180330I9.7	18	330	9.7	2.8	30°
CG3FE2190330I101	VC3FE2190330I101	19	330	10.1	2.5	30°
CG3FE2200330I7.1	VC3FE2200330I7.1	20	330	7,1	1,5	30°
CG3FE2200330I104	VC3FE2200330I104	20	330	10.4	2.8	30°
CG3FE2200330I107	VC3FE2200330I107	20	330	10.7	3.2	30°

